

HS Curing Chamber

Advanced solutions for the Concrete Block Industry



An overview of the Curing Chamber

In the HS Curing Chamber, you can cure your concrete blocks and precast elements efficiently. The Curing Chamber is the link between the wet and the dry side of your concrete block plant. Thanks to the faster gain in strength in the Curing Chambers, you take the first step towards the outstanding quality of your products and your company's success.

The right system, no matter how you plan your concrete block curing:

- › As an **Indoor System** in a building or as a free-standing **Outdoor System**
- › As a **Big Room System** or **Single Chamber System**
- › With **Curing System, Air Circulation System, special solution, or classic**



Tailored to your needs:



Dimensions can be customized without limits



Compatible with all machine manufacturers



Suitable for all board sizes and weight capacities



Available for self-assembly or with full installation supervision



On request with CE certificate and individual static calculation

Looking for more than just a Curing Chamber? We provide all the essential system components!

- › Rails and sleepers
- › Steel constructions for the wall and roof structures
- › Chamber cladding and insulation
- › Board buffer- and mold storage racks
- › Roller shutters and access doors
- › Special constructions like pressure chambers or walls



Your benefits with the HS Curing Chamber



Stability thanks to snap-in connection and modular design



Snap-in connection with **TÜV-tested load capacity** connects each frame to the pallet bearer



The Curing Chamber System is structured into **self-supporting modules** for maximum stability

- › Up to 9 m long pallet bearer stiffens the system
- › The frame structure connects up to 7 curing chambers, ensuring maximum efficiency.



The snap-in connection with reinforced clamps and locking pins for secure load bearing



No stabilizing support required



Maximum system availability



Pallet bearer with continuous lateral board guide, centering slant and large support surface of 80 mm secure boards



Pin of the **snap-in connection** prevents the pallet bearers from slipping out during storage and retrieval



Stable upper guide rail centers the finger car



Increased productivity due to less downtime

Highest quality



Durable special galvanization ZM 310 (zinc-magnesium-aluminium)

- › 3 times better protection than standard galvanized profiles
- › Edge protection and self-healing effect due to the formation of a compact protective layer



› Greater sustainability due to lower zinc usage and less coating loss

We use only **certified European strip steel** for maximum durability



Built to the highest standards for maximum load capacity and durability

Quick and easy to install



All **uprights** of an assembly are fastened with plug connectors and set up in one step



Pallet bearers are hooked into the clamps along the entire assembly length in a single operation



The **height** of the chamber and the rail are leveled at the same time



Even inexperienced technicians can assemble a module in just 2-3 days



Assembly instructions

50 years Made in Germany

In 1973

the first Curing Chamber was installed. The snap-in connection and the frame design already existed back then, but a lot has developed since then. However, one thing remains unchanged...

HIS
ANLAGENTECHNIK

Our service pledge

We accompany you along your way:

- > Fastest response time to your inquiries
- > Warranty extension to 5 years on Curing Chamber components
- > Spare parts guarantee for all components supplied in the last 10 years
- > Simple option for conversions, extensions and upgrades to respond to changing production requirements



At work for you



Over 800 Curing Chamber Systems installed worldwide



Adapted to extreme conditions – earthquake, wind and snow loads are no problem

Used by leading concrete block manufacturers – our customers benefit from more efficient production processes and durable systems

Engineered to meet your toughest challenges!



Become part of the success story...



Curing Chamber cladding of an Outdoor Curing Chamber



Rear view of an Outdoor Curing Chamber with the Curing System *Envirocure*



Soundproof enclosure for a concrete block machine



Board buffer rack for storing production boards



Pressure chamber as an alternative to an Air Circulation System



Use of **roller shutters** in a Single Chamber System



Steel construction for the vestibule of the finger car with a trussed roof girder

Your individual offer – Request now!



Interested? Fill out our inquiry form and receive your quote with your first 3D model or contact us directly for a customized solution.

Quantity of chambers:

Board size (L/W/H): x x

Length/Quantity of boards:

Weight: (incl. board)

Weight for every 2nd floor: (incl. board)

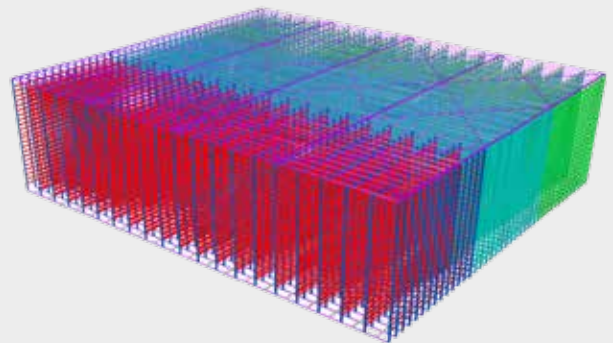
Quantity of floors: Floor distance:

Machine manufacturer:

Rails: Chamber: Vestibule:

Other:

Example: 3D model of a curing chamber



We design your solution!



Richard Trappe
General Manager
T: +49 2735 78 11 60
M: +49 170 54 111 29
E: r.trappe@hsanlagentechnik.com



Tim Trappe
Sales Manager
T: +49 2735 78 11 62
M: +49 176 567 949 68
E: tim.trappe@hsanlagentechnik.com

For more information
scan the QR code:



HS Anlagentechnik GmbH & Co. KG · Hegelstraße 6 · D-57290 Neunkirchen
info@hsanlagentechnik.com · Tel: +49 (0) 2735 78 11 60 · www.hsanlagentechnik.com